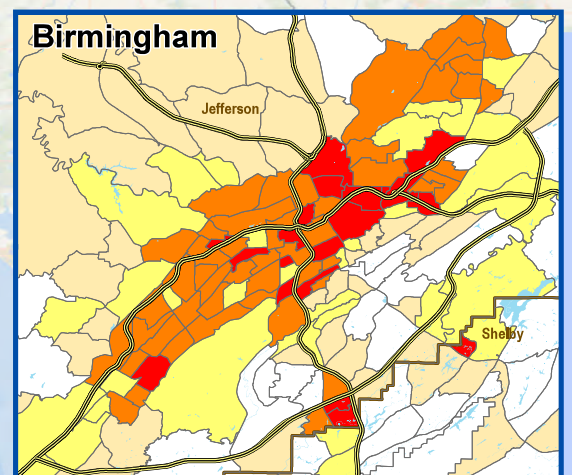
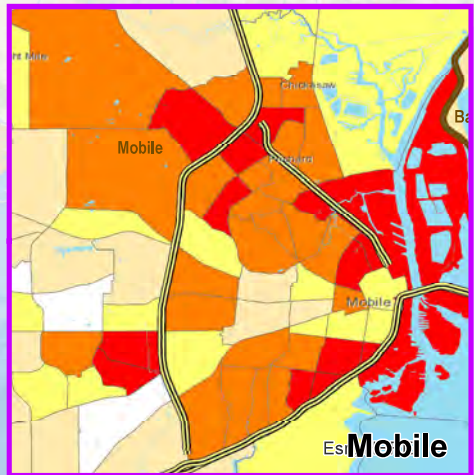
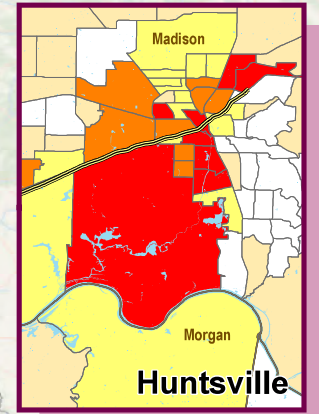
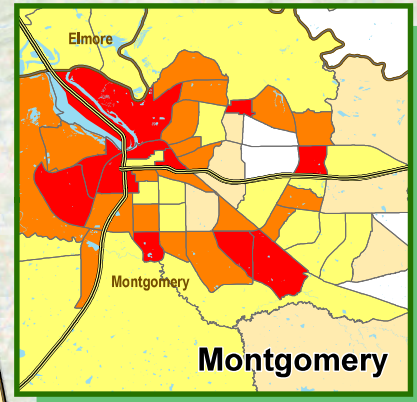
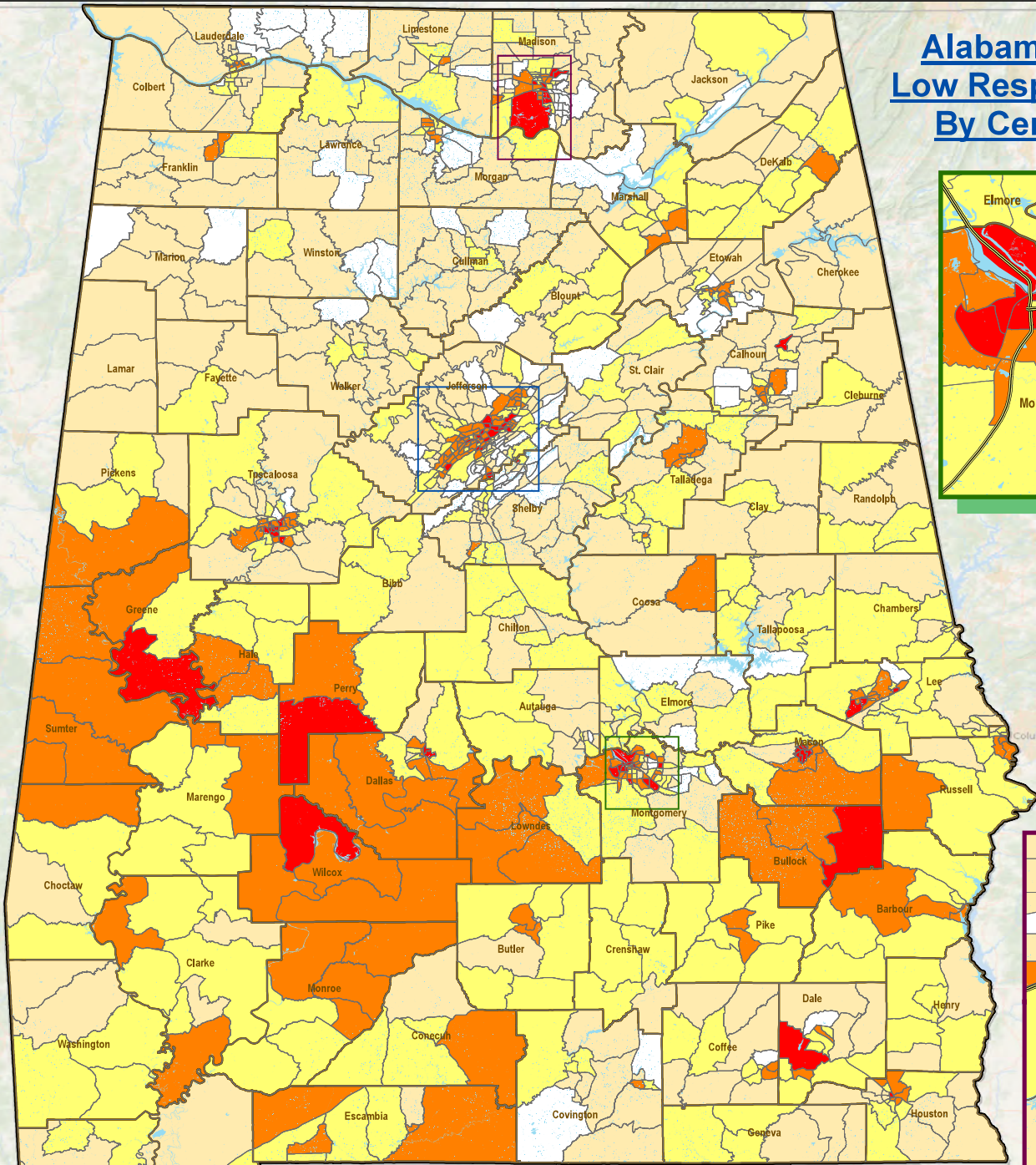


Alabama - Census Low Response Score* By Census Tract



Legend

	Tract		Low Response Score
	County		0 - 16%
			17 - 20%
			21 - 24%
			25 - 29%
			30 - 39%

*The Census Low Response Score (LRS) is a continuous score that predicts whether a tract will produce a low response rate. The score for a tract is inversely related to the mail return rate from the 2010 Census for that tract. Therefore the people living in tracts with a lower LRS are more likely to respond to 2020 Census than those with a higher LRS.